

### Ver-Mac VMS General



**Spare keys**

To access control cabinet (Only applicable to the PCMS 1500C)



**Digital Modem**

Digital modem for communication between remote computer and desktop. Telecom XT or Vodafone



**VMS trailer jack stand mounts**

Replacement stands for VMS trailers



**VMS trailer tow ball coupling**

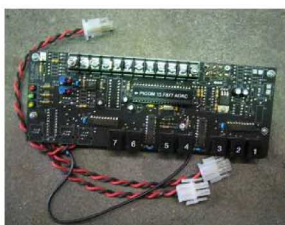
Replacement tow ball coupling. Please specify a 1 7/8 inch, 50mm or Dual Size tow ball.

### Ver-Mac PCMS-548



**Character Card for PCMS-548**

LED panel that is used to form the characters on the main VMS display. One LED per Pixel

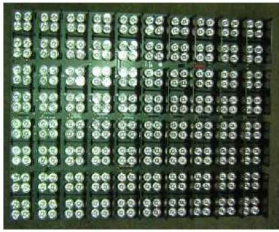


**Communication Card for PCMS-548**

Processes the message from the control unit to be displayed on the sign.



## Ver-Mac PCMS-320



**Character Card for PCMS-320, 320X & 1232**

LED panel that is used to form the characters on the main VMS display.



**RS-Buff Motherboard for PCMS-548, 320 & 1500C**

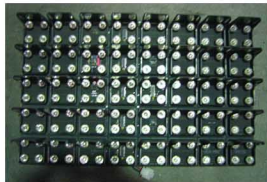
The motherboard that stores the main operating information for the VMS.



**Buff 7400 Motherboard for PCMS-548, 320, 320X, 1232 & 1500C**

NTCIP motherboard for use in the 548, 320, 320X, 1232 & 1500C Models.

## Ver-Mac PCMS- 1500C



**Character Card for PCMS-1500C**

LED panel that is used to form the characters on the main VMS display.



**Communication card for PCMS-320, 320X, 1232 & 1500C**

Processes the message from the control unit to be displayed on the sign.



**Spare wheel for a PCMS-548, 320, 320X, 1232 & 1500C**

Spare rim and tire. 6 stud wheel pattern.



**Control Cable for PCMS-548, 320, 320X, 1232 & 1500C**

Spare cable to connect control cabinet with sign cabinet.

**AUCKLAND**

8 Hotunui Drive  
Mt Wellington  
PO Box 14111  
Panmure, Auckland  
Phone 09 259 2600  
Fax 09 259 2610

**WELLINGTON**

26 Cashew Street  
Grenada North  
PO Box 13351  
Johnsonville, Wellington  
Phone 04 232 3774  
Fax 04 232 3776

**CHRISTCHURCH**

14A Hillview Road  
Phillipstown  
PO Box 10036  
Phillipstown, Christchurch  
Phone 03 366 0512  
Fax 03 366 0515

**INVERCARGILL**

200 Bond Street  
Invercargill  
PO Box 313  
Invercargill  
Phone 03 211-0300  
Fax 03 214 1711

